



# DRIVING HISTORY

A Map and Guide  
to Rockland County  
Historic Sites



# HISTORIC MARKERS

- 1 Erected by the Historical Society of Rockland County
- 2 Erected by the Rockland County Society
- 3 Other Organizations

## STONY POINT

- 2 Forts Clinton & Montgomery,  
Bear Mountain State Park, Bear Mountain . . . . .F1
- 3 James A. Farley Memorial Bridge, Rte. 9W, Stony Point . . . . .F3
- 3 Reserve Fleet (Anchor Monument), Rte. 9W, Jones Point . . . . .F1
- 3 Washington Wayne Lookout, Stony Point . . . . .E2
- 3 Wilson H. Young Memorial Bridge, E. Main St., Stony Point .F3
- 3 Site of Springsteel Farm House 1779, 16A Franck Rd.,  
Stony Point . . . . .E2
- 3 King's Ferry, Rte. 9W & Park Rd., Stony Point . . . . .F2
- 3 Stony Point Battlefield, Rte. 9W & Park Rd., Stony Point . . . . .F2
- 3 The First Road, 117 W. Main St., Stony Point . . . . .F3
- 3 Buckberg Mountain, 112 Buckberg Mtn. Rd., Stony Point . . . . .F2

## HAVERSTRAW

- 1 Treason House, Rte. 9W, West Haverstraw . . . . .F3
- 3 Cohan's Debut, Broadway & Lincoln St., Haverstraw . . . . .F3
- 3 Hudson River, Front St. & Elks Dr., Haverstraw . . . . .F3
- 3 Landslide, Division & Rockland Sts., Haverstraw . . . . .F3
- 3 Brick Industry, 183 West St., Haverstraw . . . . .F3
- 3 Crossroads, Rte. 9W & W. Railroad Ave., West Haverstraw . . . . .F3
- 3 Col. A.H. Hay, Rte. 9W, West Haverstraw . . . . .F3
- 3 DeHarte Patent, 79 N. Rte. 9W, Haverstraw . . . . .F3
- 3 Haverstraw Historic Site, 25 Fairmount Ave., Haverstraw . . . . .F3
- 3 Cheesecoate, 428 Willow Grove Rd., Thiells . . . . .E3
- 3 Garner Works, 55 W. Railroad Ave., Garnerville . . . . .E3
- 3 Calico Hill, 31 W. Railroad Ave., Garnerville . . . . .F3
- 3 Samsondale, 40 S. Rte. 9W, West Haverstraw . . . . .F3

## RAMAPO

- 3 Washington Ave. Monument, Washington & Lafayette Ave.,  
Suffern . . . . .B5
- 1 Bayard Lane, Route 202, Montebello . . . . .C4
- 3 Brown's Gate, Eleanor Burlingham Memorial Park,  
Municipal Plaza and Ballard Ave., Sloatsburg . . . . .A4
- 1 Christ Evangelical Lutheran Church, Church & Airmont Rd.,  
Airmont . . . . .C5
- 1 Cobblestone Farm, Viola Rd. & Cobblestone Farm Ct.,  
Montebello . . . . .C4
- 1 Dogwoods, 24 DeBaun Ave., Airmont . . . . .C5
- 3 Happy Valley School, 110 Pomona Rd., Pomona . . . . .D4
- 1 Haring Homestead, 606 S. Pascack Rd., Chestnut Ridge . . . . .D6
- 1 Montebello, 75 Montebello Rd., Montebello . . . . .C5
- 3 Montebello Park, 253 Spook Rock Road, Montebello . . . . .C5
- 2,3 New Hempstead Presbyterian Church,  
484 New Hempstead Rd., New City . . . . .E4
- 3 Old Sloatsburg Cemetery,  
off Eagle Valley Rd., Sloatsburg . . . . .A4
- 1 The Pig Knoll School,  
584 Rte. 306, Pomona . . . . .D4

## RAMAPO (continued)

- 3 Post at Ramapough/Sidman's Bridge,  
Rte. 17, Hillburn . . . . .B5
- 1 Rochambeau Encampment, Lafayette & Washington Aves., Suffern  
B5
- 1 School of Living,  
21 Bayard Lane, Montebello . . . . .C4
- 1 Shady Side Farm, 670 New Hempstead Rd., New Hempstead D4
- 2 Site of Camp Ramapough and Intrenchments,  
Torne Valley Rd., Hillburn . . . . .B5
- 3 Site of Kellogg & Maurice Railroad Bridge, Rte. 59, Hillburn .B5
- 3 Sloat House & Inn, 19 Orange Turnpike (Rte. 17), Sloatsburg A4
- 1 Soldier's Monument, Lafayette & Washington Aves., Suffern . .B5
- 2 Spook Rock, Spook Rock & Highview Rds., Tallman . . . . .C5
- 1 Suffern's Depot, 1 Erie Plaza, Suffern . . . . .B5
- 1 Suffern Grammar School, 41 Wayne Ave., Suffern . . . . .B5
- 2 Suffern's Tavern Site, Washington & Lafayette Aves., Suffern . .B5
- 1 Torne Brook Farm, Torne Brook Rd., Ramapo . . . . .B4
- 3 Thurgood Marshall, 45 Mountain Ave., Hillburn . . . . .B5
- 1 Viola United Methodist Church, Viola Rd., Suffern . . . . .D4
- 3 William W. Snow House, Fourth St. & Terrace Ave., Hillburn B5
- 3 Brick Church, 222 Brick Church Rd., New Hempstead . . . . .D4
- 3 1700 Cemetery, 222 Brick Church Rd., New Hempstead . . . . .D4
- 3 1786 Schoolhouse, 224 Brick Church Rd., New Hempstead .D4
- 3 First Town Hall, 221 Brick Church Rd., New Hempstead . . . . .D4

## CLARKSTOWN

- 2 First Milestone from Nyack,  
Rte. 59 near Mountainview Ave., Nyack . . . . .G5
- 1 Jacob Blauvelt House, 20 Zukor Road, New City . . . . .F4
- 1 Clarkstown Reformed Church, 107 Strawtown Rd.,  
West Nyack . . . . .F5
- 1 Clarksville Inn, One Strawtown Rd., West Nyack . . . . .F5
- 1 Clarksville, West Nyack & Sickletown Rds., West Nyack . . . . .F5
- 1 Collyer Farm Pond & New City Park,  
Collyer Rd. & Lake Dr., New City . . . . .E4
- 1 Colonial Clarkstown, 135 Strawtown Rd., West Nyack . . . . .F5
- 1 Congers Lake Dam, Gilchrest Rd., Congers . . . . .G4
- 1 Congers School, 9 Lake Rd., Congers . . . . .F4
- 1 Congers Station, Lake Rd. & Burnside Ave., Congers . . . . .G4
- 1 Dr. Davies Farm, Dr. Davies Rd., off Rte. 9W, Congers . . . . .G4
- 3 H. R. Stevens House, 234 Congers Road, New City . . . . .F4
- 1 West Nyack's Last Horse Trough, West Nyack Free Library,  
65 Strawtown Rd., West Nyack . . . . .F5
- 1 Kings Highway, Kings Hwy. & Congers Rd., Congers . . . . .F4
- 1 Kings Highway & the Long Clove, Old Haverstraw Rd.,  
Congers . . . . .F4
- 1 Martinus Hogenkamp Cemetery, South Little Tor Rd.,  
New City . . . . .E4

# HISTORIC MARKERS

## CLARKSTOWN (continued)

- 1 Mount Moor African American Cemetery,  
Palisades Center, West Nyack .....F5
- 1 Nyack Turnpike, West Nyack Rd. & West Nyack Way,  
West Nyack .....F5
- 1 Old Clarkstown Reformed Church Cemetery,  
254 Germonds Rd., West Nyack .....F5
- 3 Old Palmer Burying Ground,  
104 Old Mountain Rd., Upper Nyack .....G5
- 2 Old Stone Church, 347 N. Broadway, Upper Nyack .....G5
- 1 The Old Parsonage, 106 Strawtown Rd., West Nyack .....F5
- 1 Paul Farmhouse, Gilchrest Rd., Congers Park, Congers .....G4
- 1 Pye's Corner, Strawtown & Germonds Rds., West Nyack .....F5
- 1 DeClark-Polhemus Mill, Intersection of Germonds, Strawtown  
& Old Mill Rds., West Nyack .....F5
- 1 Rockland County Court House, Main St., New City .....F4
- 1 Scotland Hill Burial Ground, Carriage Lane, Nanuet .....E5
- 2 Site of First Reformed Protestant Dutch Church of New  
Hempstead  
254 Germonds Rd., West Nyack .....F5
- 1 Snedeker Farm, 74 Endicott St., Congers .....F4
- 1 Snedekers Landing, Rte. 9W & Long Clove Rd., Congers ....F4
- 1 Treason Site, Hook Mountain State Park  
off Riverside Ave., Dutchtown .....F4
- 1 Van Houten Fields,  
Van Houten Fields & Sickletown Rds., West Nyack .....F5
- 1 Washington's Encampment, 134 Strawtown Rd., West Nyack .F5

## ORANGETOWN

- 3 '76 House (Andre's Prison), 110 Main St., Tappan .....F7
- 1 Blauvelt-Norris-Burr House, 608 Western Hwy., Blauvelt ....F6
- 1 Bogertown, 102 Paradise Ave., Piermont .....G6
- 1 Camp Shanks, Independence Ave., Orangeburg .....F7
- 1 Carson McCuller's House, 131 S. Broadway, South Nyack ...G6
- 1 Clausland Cemetery, Greenbush Rd. at Mountain Ave.,  
Orangeburg .....F6
- 1 Colonial Orangetown, Orangeburg & Hunt Rds., Orangeburg F6
- 1 Couch Court, 46 South Broadway, Nyack .....G5
- 1 Cuyper-Van Houten House, 66 Sickletown Rd., Pearl River .F6
- 2 DeWint House, 20 Livingston Ave., Tappan .....F7
- 3 The Manse, 28 Old Tappan Rd., Tappan .....F7

## ORANGETOWN (continued)

- 3 DeWint House, Oak Tree Rd. & Livingston St., Tappan .....F7
- 3 Trial of Andre, 32 Old Tappan Rd., Tappan .....F7
- 3 Andre Monument, Old Tappan Rd. & Andre Hill Rd., Tappan .F7
- 3 General Lafayette, Western Hwy. & Christine Ln., Tappan ...F7
- 3 Washington's Camp, Western Hwy. & Christine Ln., Tappan .F7
- 1 Edward Hopper House Art Center, 82 North Broadway,  
Nyack .....G5
- 1 The First Court House, Tappan Green, Tappan .....F7
- 1 First Reformed Church, 18 South Broadway, Nyack .....G5
- 1 Fremont Monument, Rockland Cemetery, Kings Hwy.,  
Sparkill .....G6
- 1 Hickory Hill Cooperative, Hickory Hill & Old Tappan Rds.,  
Tappan .....F7
- 3 Historic Underground Railroad,  
298 Main St., Nyack .....G5
- 3 Historic Underground Railroad,  
176 Main St., Nyack .....G5
- 1 Jacob J. Blauvelt Homestead,  
525 S. Western Hwy., Blauvelt .....F6
- 1 Johannes Isaac Blauvelt House, 820 Western Hwy., Blauvelt .F6
- 1 Johannes J. Blauvelt Homestead, 514 S. Western Hwy.,  
Blauvelt .....F6
- 1 Johannes Perry House, 49 Elizabeth St., Pearl River .....E6
- 1 Memorial Park, Piermont & DePew Aves., Nyack .....G5
- 2 Nyack First Settlement, 17 South Broadway, Nyack .....G5
- 3 Nyack Library, 59 South Broadway, Nyack .....G5
- 1 Oak Hill Cemetery, 140 N. Highland Ave., Nyack .....G5
- 1 Saint Charles A.M.E. Zion Church, 432 Valentine Ave.,  
Sparkill .....G7
- 1 Michael Salyer House, 213 Blue Hill Rd., Orangeburg .....F6
- 1 Shanks Village, 26 Orangeburg Rd., Orangeburg .....F6
- 3 Skunk Hollow, (North of entrance to Lamont-Doherty Earth  
Observatory) Rte. 9W, Palisades .....G7
- 1 Sneden House, 38 Paradise Ave., Piermont .....G6
- 2 Tappan Reformed Church, 32 Old Tappan Rd., Tappan .....F7
- 3 Liberty Street School, Cornerstone Placement, Depew Ave.,  
near Liberty St., Nyack. ....G5



# HISTORIC FARMS & PARKS

## RAMAPO

### Brooklands Park

Lake Rd., Suffern, NY 10901  
 Site of Brooklands, home of Daniel Beard, a founder of Boy Scouts of America. . . . .C5

### Duryea Farm of the Fellowship Community

101 Ackertown Rd., Chestnut Ridge, NY 10952 356-1988  
 Founded in 1883, produce is marketed to consumers who wish to do their own picking. Beginning in 1960, the Duryeas invited the public to the harvest. Now owned and farmed by the Fellowship Community, which converted the orchards to biodynamic organic fruits and vegetables. . . . .D6

### Monsey Glen

140 Saddle River Rd., Monsey, NY 10952  
 A former habitat of Munsee Indians. . . . .D5

### Orchards of Concklin

2 S. Mountain Rd. & Rte. 45, Pomona, NY 10970 • 354-0369  
 Pick-your-own apples and pears 10 am - 5 pm every Saturday and Sunday in September & October. Starting in mid-October, you can pick your own pumpkins, too. Concklin's year-round market features garden plants, local berries, cherries, greens, corn, tomatoes and peaches, each in its season. Fresh pressed apple cider, home baked goods (preservative-free), international cheeses and coffees. . . . .E4

## CLARKSTOWN

### Doctor Davies Farm

Dr. Davies Rd., Box 146, Congers, NY 10920 • 268-7020  
 Founded in 1891 by American artist Arthur B. Davies and Dr. Lucy Virginia Meriwether Davies, a relative of Meriwether Lewis of the Lewis and Clark Expedition and a full time practitioner, who delivered over 6000 babies in Rockland. Pick apples 7 days a week, 10 am - 5 pm starting Labor Day - 2nd week of November. Hayrides and picnicking encouraged. One market located at the orchard in Congers at 306 Route 304 and the other on Dr. Davies Rd, 1/4 mile north of Lake Rd. and Rte. 9W. . . . .G4

## CLARKSTOWN (continued)

### Dutch Garden

Main Street, New City, NY 10956 • 638-5484  
 South end of the Rockland County Courthouse.  
 This 3 acre garden consists of a brick teahouse with fireplace, gazebo, an arbor and a bandstand. A variety of flowers line the brick paths and the Demarest Kill separates the park from the rear of the County Office parking lot. Walking paths, sitting areas, and picnicking. . . . .F4

### Van Houten Gardens

241 S. Little Tor Rd., New City, NY 10956 • 634-2498  
 Full service garden center, open 7 days a week, 8 am – 7 pm.  
 Formerly part of the Cropsey Farm. Across the road is a Dutch Sandstone house, built around 1769 and owned by the Cropsey family since 1893. . . . .E5

## ORANGETOWN

### Van Houten Farms

68 Sickletown Rd., Pearl River, NY 10965 • 735-4689  
 Located on the eastern edge of Pearl River. A complete garden center featuring bedding and potted plants, hanging baskets, perennials, roses, mums and nursery stock. Their own vegetables and local fruit sold from summer through fall, with a large pumpkin display featuring a resident witch in October. Holiday greens, trees and poinsettias finish the season in December. Adjacent is the Van Houten/Kuyper Dutch Sandstone House, the main section having been built in 1732 and purchased by Van Houten circa 1812. . . . .F6



# RESTAURANTS & ACCOMMODATIONS

## STONY POINT

### Gilmor Sloane House

17 Crickettown Rd., Stony Point, NY 10980 • 786-5674

Call for brochure.

An 1856 Victorian mansion...truly vintage with no televisions or telephones. An 1888 Barn Playhouse (Penguin Repertory) on grounds. Experience life differently from the rest of the year. . . . .E2

## RAMAPO

### The South Street

Restaurant and Lounge

Orange Turnpike (Rte. 17 N), Sloatsburg, NY 10974 • 753-5200

"The area's largest selection of seafood and steaks"

Originally The Glenwood Hotel, est. 1908, which was owned and operated by Henry and Kathleen Tobin. For 50 years the elegant "open-air" dining rooms of the Glenwood Hotel became a favorite dinner stop for many travelers en-route to upstate .NY, Vermont, and Canada, prior to the opening of the NYS Thruway. Wealthy patrons from nearby Tuxedo Park were also regulars at the Glenwood. The upper floors operated as a boarding house for workers in the mills of Sloatsburg until 1950. In 1998, the building was preserved and restored to its original appearance. It won a Rockland County Executive's Historic Preservation Merit Award in the Adaptive Use Category in 1999. . . . .A4

## CLARKSTOWN

### The Clarksville Inn

One Strawtown Road, West Nyack, New York 10994 • 358-8899

Built by Thomas Warner in 1840 as a hotel, the blacksmith shop still remains and is used as a retail shop. The Inn now serves as a restaurant, open for dinner seven evenings. . . . .F5

## HAYERSTRAW

### Bricktown Inn

112 Hudson Avenue, Haverstraw, NY 10927 • 429-8447

www.bricktowninnbnb.com

Charming Victorian Bed and Breakfast is located in the Village of Haverstraw, once known as the "brickmaking capital of the world." . . . . .F3

## ORANGETOWN

### Old '76 House & Restaurant

110 Main St., Tappan, NY 10983 • 359-5476 • www.76house.com

Third oldest restaurant in America (1753). Was Major John Andre's prison. The site of the signing of the Orangetown Resolutions. Open 7 days, lunch, dinner & Sunday brunch. . . . .F7



# NATIONAL REGISTER SITES

## STONY POINT

|  |     |
|--|-----|
| Bear Mountain Bridge and Toll House, Bear Mountain | .F1 |
| Bear Mountain Inn, Bear Mountain                   | .F1 |
| Stony Point Battlefield, Stony Point               | .F2 |
| Stony Point Lighthouse, Stony Point                | .F2 |
| William H. Rose House, Stony Point                 | .F2 |

## HAVERSTRAW

|  |     |
|--|-----|
| Fraser-Hoyer House, West Haverstraw                      | .F3 |
| Garner Mansion Site, Railroad Ave., Garnerville          | .F3 |
| Henry M. Peck House Site, West Haverstraw                | .F3 |
| Homestead, Haverstraw                                    | .F3 |
| King's Daughters Public Library, 85 Main St., Haverstraw | .F3 |
| M/V Commander, Haverstraw Marina, Haverstraw             | .F3 |
| United States Post Office, 86 Main St., Haverstraw       | .F3 |

## RAMAPO

|  |     |
|--|-----|
| Brick Church Complex, Brick Church Rd., New Hempstead                        | .D4 |
| English Church and Schoolhouse, New City                                     | .E4 |
| John DeBaun Mill, 270 Rte. 59, Tallman                                       | .C5 |
| Ladentown United Methodist Church,<br>14 Ladentown Rd., Pomona               | .D3 |
| Old Sloatsburg Cemetery, off Eagle Valley Rd., Sloatsburg                    | .A4 |
| Sloat's Dam & Mill Pond,<br>Municipal Plaza and Ballard Ave., Sloatsburg     | .A4 |
| Sloat House & Inn, 19 Orange Turnpike (Rte. 17), Sloatsburg                  | .A4 |
| Jacob Sloat Mansion, (Harmony Hall) 15 Liberty Rock Rd.,<br>Sloatsburg       | .A4 |
| Torne Brook Farm, Ramapo   | .B4 |
| United States Post Office, 7 N. Madison Ave., Spring Valley                  | .D5 |
| United States Post Office, 15 Chestnut St., Suffern                          | .B5 |
| Washington Avenue Soldier's Monument & Triangle,<br>Washington Ave., Suffern | .B5 |

## CLARKSTOWN

|   |     |
|---|-----|
| H. R. Stevens House, 234 Congers Road, New City                                 | .F4 |
| Jacob Blauvelt House, 20 Zukor Road, New City                                   | .F4 |
| Old Stone Church, 347 N. Broadway, Upper Nyack                                  | .G5 |
| Mount Moor African American Cemetery,<br>Palisades Center, West Nyack           | .F5 |
| Philadelphia Toboggan Company,<br>Carousel No. 15, Palisades Center, West Nyack | .F5 |
| Rockland County Courthouse & Dutch Garden, Main St.,<br>New City                | .F4 |
| Terneur-Hutton House, West Nyack  | .F6 |
| Upper Nyack Firehouse, 330 N. Broadway, Upper Nyack                             | .G5 |
| Van Houten's Landing Historic District, Upper Nyack                             | .G5 |

## ORANGETOWN

|  |     |
|--|-----|
| Abner Concklin House, Palisades  | .G7 |
| Andre Monument, 42 Andre Hill Rd., Tappan                                    | .F7 |
| Big House, Palisades   | .G7 |
| Cliffside, Palisades   | .G7 |
| Carson McCuller's House, 131 S. Broadway, South Nyack                        | .G6 |
| DeWint House, 20 Livingston Ave., Tappan                                     | .F7 |
| Dederer Stone House or Stonehurst, Piermont                                  | .G7 |
| Piermont Railroad Station, Ash Street, Piermont ( <i>pending</i> )           | .G6 |
| Edward Hopper House Art Center, 82 North Broadway, Nyack                     | .G5 |
| Haddock's Hall, 300 Ferdon Ave., Piermont                                    | .G7 |
| Haring-Eberle House, Palisades   | .G7 |
| Hopson Swan Estate, Sparkill   | .G7 |
| Jacob Perry House, 15 Sickletown Rd., Pearl River                            | .F6 |
| Little House, Palisades  | .G7 |
| Neiderhurst, Palisades   | .G7 |
| Tallman Mountain State Park, Rte. 9W, Sparkill                               | .G7 |
| Ross-Hand House, South Nyack   | .G5 |
| Edward Salyer House, Pearl River   | .E6 |
| Michael Salyer House, 213 Blue Hill Rd., Orangeburg                          | .F6 |
| Seven Oaks, Palisades  | .G7 |
| Onderdonk House, 758 Piermont Ave., Piermont                                 | .G7 |
| Rockland Road Bridge, between Piermont & Ferdon Ave,<br>Piermont             | .G7 |
| Sparkill Creek Drawbridge, Bridge St., Piermont                              | .G7 |
| St. Paul's United Methodist Church,<br>Broadway & Division Ave., South Nyack | .G6 |
| Tappan Zee Playhouse Site, 20 S. Broadway, Nyack                             | .G5 |
| United States Post Office, 48 S. Broadway, Nyack                             | .G5 |
| United States Post Office, Franklin Ave., Pearl River                        | .E6 |
| Wayside Chapel, Grand View-on-Hudson   | .G6 |
| Closter Road-Oak Tree Road, Palisades  | .G7 |
| Washington Spring Road, Woods Road Historic District,<br>Palisades           | .G7 |
| Tappan Historic District, Tappan   | .F7 |
| Stonehurst, 65 Rockland Road, Sparkill                                       | .G7 |



# MUSEUMS

## STONY POINT

**Bear Mountain Trailside Museums and Wildlife Center**  
 Bear Mountain State Park, Bear Mountain, NY 10911 • 786-2701  
 Animals on view include black bears, beaver, coyote and birds of prey. Exhibits on American Indians, the Revolutionary War, the Boy Scouts of America, insects and preserved birds. Reptiles, amphibians and fish are on display. Open 9 am-4:30 pm year-round. Admission on weekends and holidays is \$1, children 6 to 13, 50 cents; children 5 and younger, free. On weekends and holidays during winter, parking is \$6. Handicapped accessible. . . . .F1

**Stony Point Battlefield State Historic Site**  
 Park Road off Rte. 9W, Stony Point, NY 10980 • 786-2521  
 Brigadier General Anthony Wayne led a surprise midnight assault against the British garrison on this peninsula on the Hudson River on July 15, 1779. Self-guided tours and museum exhibits cover the history of the only Revolutionary War battlefield in Rockland County and the 19th century Stony Point Light-house. On weekends, staff members in period dress demonstrate muskets, artillery, open fire cooking and camp life - featuring children's activities. Special events including evening battlefield and lighthouse tours are held throughout the spring, summer and fall. The site offers picnic areas with great river views. The Stony Point Lighthouse is open for tours by appointment for older children and adults, weather permitting. Museum open mid-April through October, 10am-4:30pm Wednesday - Saturday, 12-4:30 pm Sunday. Grounds open Monday through Friday 9am-5pm, Saturday 10-5, Sunday 12-5. Open Monday holidays 12-5pm, Memorial Day, Independence Day and Labor Day. Parking Fee on Saturday, Sunday and Monday holidays \$5.00 per vehicle. Grounds only, open November to March, weather permitting, Monday to Friday from 10am-4pm. School and group programs available by appointment . . . . .F2

## Haverstraw

**Haverstraw Brick Museum**  
 12 Main St., Haverstraw, NY 10927 • 359-1663  
 Exhibits of the over 100-year history of brick-making in the Haverstraw area once known as "The Brick-making Capital of the World".  
 Hours: Sunday and Wednesday, 1- 4 pm or by appointment. . . . .F3

## RAMAPO

**Jessup Learning Center at the Duryea Farm of the Fellowship Community**  
 101 Ackertown Rd., Chestnut Ridge, NY 10977 • 356-8494  
 Agricultural artifacts and classes. . . . .D6

**Little Red Schoolhouse**  
 50 Red Schoolhouse Rd., Chestnut Ridge, NY 10977 • 577-6099  
 Built in 1890. Exhibits relate to the history of education in Rockland County. . . . .D6

## RAMAPO (continued)

**Holocaust Museum & Study Center**  
 17 South Madison Ave., Spring Valley, NY 10977 • 356-2700  
 E-mail: museum@holocauststudies.org  
 Website: www.holocauststudies.org  
 Permanent exhibit combines graphics, montages, artifacts, and audio-visual displays to detail every phase of the Holocaust. Changing art exhibits. Open to public free of charge. , Monday - Wednesday, 10am-4 pm., Thurs. 10am-7pm, Sun. (Sept.-June) Noon-4pm, Call To Confirm Times, Closed major Jewish holidays. Handicapped accessible. . . . .D5

**Sloatsburg Historical Society**  
 Native American artifacts display.  
 Sloatsburg Public Library, 1 Liberty Rock Rd., Sloatsburg, NY 10974 753-2001  
 Permanent exhibit of artifacts excavated from the Spring House Rock Shelter in Sloatsburg. Artifacts date back to thousands of years. FREE. Call for hours and exhibit information . . . . .A4

**Suffern Railroad Museum**  
 1 Erie Plaza, Suffern, NY 10901 • 369-7076 . . . . .B5

**Suffern Village Museum**  
 61 Washington Ave., Suffern, NY 10901 • 357-0649  
 Exhibits relating to the history of Suffern and the Ramapo area. Includes displays relating to American Indians, original Avon products, nearby iron mines and Dan Beard, one of the founders of the Boy Scouts of America. Open Sunday, 2-4 pm, September through June. . . . .B5

## CLARKSTOWN

**The Historical Society of Rockland County**  
 20 Zukor Rd., New City, NY 10956 • 634-9629  
 E-mail: info@rocklandhistory.org  
 A four-acre site featuring a history museum and the 1832 Jacob Blauvelt House. Changing exhibitions and programs throughout the year in the museum. Annual Dollhouse Show, History Month Events in October, Independence Day Celebration.  
 Open 9:30 am - 5 pm, Tuesday-Friday, 1 to 5 pm, Saturday and Sunday. Closed Mondays. Admission by suggested donation of \$2- \$5. Handicapped accessible.

**The Jacob Blauvelt House**  
 20 Zukor Rd., New City, NY 10956 • 634-9629  
 The restored 1832 house contains period rooms that illustrate the lifestyles of local farming families during the first half of the nineteenth century. A museum that features ongoing exhibitions and a historic barn complex are also part of the property. Sundays, 1-5 pm. Group tours by appointment and Holiday Candlelight Tours. . . .F4

# MUSEUMS

## CLARKSTOWN (continued)

### Law Enforcement Museum

55 New Hempstead Rd., New City, NY 10956 • 638-5585  
 The walls of the county Sheriff's Department are lined with photos and interesting memorabilia about enforcement in Rockland County, New York City and around the nation. Free admission. Handicapped accessible. Open weekdays by appointment. . . . .E4

### Rockland Lake Museum

Rockland Lake State Park, Lake Road, Congers, NY • 268-3020  
 Email: dennishaight@oprhp.state.ny.us  
 Exhibits relating to the local ice industry and community life in Rockland Lake Village. Open all year. Call in advance.  
 Admission free. . . . .G4

## ORANGETOWN

### Camp Shanks

World War II Museum, South Greenbush Rd., Orangeburg, NY 10962 • 638-5419 (Call for brochure)  
 Exhibits focus on military life in Camp Shanks during WWII. Some 1.3 million soldiers shipped out from here, on their way to the Normandy Invasion. Handicapped accessible.  
 Open Spring, Summer, Fall, Saturday and Sunday, 10 am-3 pm. . . .F6

### DeWint House (George Washington Masonic Historic Site)

20 Livingston Ave., Tappan, NY 10983 • 359-1359  
 A registered National-Landmark built in 1700, it is the oldest extant house in Rockland County. It depicts typical Dutch architecture of the era. Washington and staff lived in the home in 1780 during the trial of British Maj. John Andre, and three other times during the Revolutionary War. Handicapped accessible, benches, shade trees and picnic tables. Open daily 10-4 pm.  
 Free admission. . . . .F7

## ORANGETOWN (continued)

### Edward Hopper House Art Center

82 North Broadway, Nyack, NY 10960 • 358-0774  
 This home of the realist painter Edward Hopper was built in 1858. One room is devoted to materials about Hopper's work and life in Nyack. Three other rooms provide space for monthly exhibits by local artists. The restored garden is the setting for jazz concerts on summer evenings. Handicapped accessible. Open Saturday and Sunday, 1- 5 pm. Admission free. Suggested donation \$1.  
 www.edwardhopperhouseartcenter.org for schedule of exhibits programs and classes. . . . .G5

### The Historical Society of the Nyacks

For exhibit information, call: 353-0131.  
 Email: w&bperry@tco.com . . . . .(No point on map)

### Orangetown Museum & Archives

213 Blue Hill Rd., Pearl River, NY 10965 • 735-0429  
 Email: otownmuseum@fcc.net  
 Open since 1996, the museum has changing exhibits reflecting Orangetown's history. Holiday exhibit begins last weekend in November through last weekend in December. Hours are Tuesday, 9 am - 2 pm, Sunday, 1 - 4 pm, and by appointment. Handicapped accessible. Donations accepted. . . . .E6

### The Piermont Historical Society

P. O. Box 362, Piermont, NY 10968 • 548-2285  
 Email: wlplumb@aol.com . . . . .(No point on map)

### Tappantown Historical Society

P.O. Box 71, Tappan, NY 10983 • 359-2730  
 Located in a quaint historic district dating back to America's beginnings, the Society sponsors the yearly "Colonial Days" celebration. . . . .(No point on map)





# HISTORIC CEMETERIES

## H A V E R S T R A W

### Mt. Repose Cemetery

Rte. 202 & 9W, Haverstraw, NY

Publicly established as a cemetery in 1853, it includes the graves of early settlers of Rockland, writer and adventurer Leonides Hubbard, composer Kurt Weil and his wife, actress Lotte Lenya. . . . . F3

## R A M A P O

### Old Sloatsburg Cemetery

Entrance off Eagle Valley Rd., Sloatsburg, NY

1700 gravesites, 1400 marked with headstones, earliest burial Private John Sloat 1781, during Revolutionary War. A settlement-era burial ground associated with the development of the community of Sloatsburg including the Sloat Family Burial Ground, founders of the Village. . . . . A4

## C L A R K S T O W N

### Mount Moor African American Cemetery

Palisades Center

West Nyack, NY 10994

Deeded in 1849, it was called "the burying ground for colored people" until 1986. Of the more than 100 people buried here are veterans from the Civil War to the Korean War, including Civil War veteran Lafayette Logan of Massachusetts's 54th Regiment and members of the Buffalo Soldiers. . . . . F5

## O R A N G E T O W N

### Oak Hill Cemetery

140 N. Highland Ave. (Rte. 9W), Nyack, NY 10960

1840-present.

Dedicated on June 27, 1848, it reflected a change from small family and religious burial grounds to community cemeteries. Graves include founders of Nyack, playwright Charles MacArthur and his wife, actress Helen Hayes, scientist and inventor William Hand, and artist Edward Hopper. . . . . G5

### Rockland Cemetery

201 Kings Highway, Sparkill, NY 10976

The cemetery was created in 1847, by Eleazar Lord, author, educator and first president of the Erie Railroad. Buried here are veterans of the Civil War and later wars; John Charles Fremont, the Pathfinder; engineer Henry Honeychurch Gorringer, and local physician Dr. George A. Leitner. . . . . G6



# HISTORIC CHURCHES

## STONY POINT

### Marian Shrine

174 Filors Lane, Stony Point, NY 10980 • 947-2200  
An exact replica of St. John Bosco's birthplace. Statues by Italian sculptor Henry Arrighini. Center for pilgrimage and prayer.  
9 am - 5 pm daily. Noon mass.  
Special Sunday activities and schedule. . . . . E3

## HAVERSTRAW

### Central Presbyterian Church

64 New Main St., Haverstraw, NY 10927 • 429-5111  
Built in 1909, with Medieval English components, it replaced the 1847 edifice on Clinton Street. The church has 13 full-size Tiffany windows, the largest dedicated to Rev. Amasa S. Freeman, minister from 1846 to 1898. . . . . F3

### St. John's-in-the-Wilderness

Harriman State Park, 16 Johnstown Road, Stony Point, NY 10980  
786-0366 • www.stjohnsinthewilderness.org  
The Gothic-style Episcopal church was erected in 1880 of native stone by Margaret Furniss Zimmerman in memory of her husband, John. It served the mountain communities of Sandyfields and Johnstown before the formation of Harriman State Park.  
The 40-acre property of St. John's is the only private land within the park. . . . . C3

### Saint Peter's Church

115 Broadway, Haverstraw, NY 10927 • 429-2196  
Organized by Irish immigrants in 1847, St. Peter's is the oldest Catholic Church in Rockland County. The original church on Ridge Street was converted into a school, St. Peter's School, and the current church was built nearby in 1869. . . . . F3

## RAMAPO

### The Brick Church

Reformed Church of W. New Hempstead  
220 Brick Church Rd., New Hempstead, NY 10977 • 354-6131  
The congregation was formally organized in 1774. The church, the third on the site, was built in 1858. In the adjacent cemetery are the graves of early local settlers, Revolutionary and Civil War veterans, and Daniel Carter Beard, a founder of the Boy Scouts of America. D4

### Christ Evangelical Lutheran Church

3 Church Rd., Airmont, NY 10901 • 357-1003  
This congregation was founded in 1715, by Palatine Germans in Mahwah, New Jersey. The church was incorporated in Rockland County in 1850, and the current edifice built in 1855. . . . . C5

## RAMAPO (continued)

### New Hempstead Presbyterian Church

484 New Hempstead Rd., New City, NY 10956 • 354-2372  
Second oldest congregation in Rockland County and the first English-speaking church, established 1734. Present wooden structure was built in 1827. . . . . E4

## CLARKSTOWN

### Clarkstown Reformed Church

107 Strawtown Rd., West Nyack, NY 10994 • 358-4320  
Established 1750, as a Dutch-speaking church. Current Swiss-style church was built in 1871. Original site of the church was at 254 Germonds Road where a cemetery remains. Early residents of the area, veterans of the Revolutionary War and War of 1812, and three generations of the noted Hill family are buried there. . . . . F5

### Old Stone Church

347 Broadway, Upper Nyack, NY 10960  
Rockland's oldest extant church building, made of local sandstone and hand-hewn beams, 1813-1814. It served as a Methodist church and later became interdenominational. . . . . G5

## ORANGETOWN

### The Christ Episcopal Church of Piermont

416 Valentine Ave., Sparkill, NY 10976 • 359-2858  
This stone church was built in 1865. It is Rockland's first established Episcopal Church. The first service was held in 1847 in a converted warehouse. . . . . G7

### St. Charles A.M.E. Zion Church

432 Valentine Ave., Sparkill, NY 10976 • 359-3509  
Built in 1897, from stone cut by master builder William Brown and others, St. Charles is the successor to the 1854 Skunk Hollow Mountain Church and the 1865 Swamp Church of Palisades. The church was named for Charles Kingsley Taylor, whose widow was a generous benefactor of St. Charles. . . . . G7

### Tappan Reformed Church

32 Old Tappan Rd., Tappan, NY 10983 • 359-1694  
The first church organized in the county by Dutch settlers (1694). Its present structure was built in 1835. The nearby residence, the Manse, was built in 1729 and has since undergone renovations. . . . . F7

# LIBRARIES WITH COUNTY

## HISTORY SECTIONS

### HAVERSTRAW

#### King's Daughters Public Library

(Brick-making industry once centered in Haverstraw.)

10 W. Ramapo Rd., Garnerville, NY 10923  
786-3800 . . . . . E3

#### Village Library

(1905 Fowler building overlooks Hudson River - some local history.)

85 Main St., Haverstraw, NY 10927  
429-3445 . . . . . F3



### RAMAPO

#### Finkelstein Memorial Library

(Books, maps and news-clipping files on Rockland County history and local newsworthy events.)

24 Chestnut St., Spring Valley, NY 10977  
352-5700 . . . . . D5

#### Suffern Free Library

(The Ramapo Room contains books, clippings and photographs of western Ramapo.)

210 Lafayette Ave., Suffern, NY 10901  
357-1237 . . . . . C5

### CLARKSTOWN

#### New City Library

(Large collection public library local history collection includes the Genealogical Society of Rockland County.)

220 N. Main St., New City, NY 10956  
634-4997 . . . . . F4

### ORANGETOWN

#### Nyack Library

(Large collection of photographs, clippings and printed material on history of the Nyacks in 1903 Carnegie Library building.)

59 South Broadway, Nyack, NY 10960  
358-3370 . . . . . G5

#### Valley Cottage Free Library

(Large collection of Valley Cottage photographs, printed materials, and clippings on Rockland County.)

110 Route 303, Valley Cottage, NY 10989  
268-7700 . . . . . G5



# ADDITIONAL ATTRACTIONS

## STONY POINT

### **Pyngyp Community Center**

Rte. 106 & Cedar Flats Rd., Stony Point, NY 10980

One room schoolhouse used for community services. There are eight such structures throughout the county, some privately owned. . . . . E2

## HAVERSTRAW

### **The M/V Commander (Hudson Highlands Cruises)**

29 Drew Rd., Fort Montgomery 10922 • 534-SAIL

Commander is a rare design link between the heavily built-for-steam boats of the late nineteenth century and the more lightly built vessels of the twentieth century. It was listed in 1984 on both the State and National Registers of Historic Places and is also listed in the International Register of Historic Ships, Great American Ships and the Dictionary of American Fighting Ships. It may be chartered for private parties and excursions. . . . . F3

## RAMAPO

### **Lafayette Theater**

97 Lafayette Ave., Suffern, NY 10901 • 369-8234

Rockland's only surviving movie palace, built 1927 and having a renovated 1931 Wurlitzer pipe organ installed by the Theater Organ Society in 1992. . . . . B5

## CLARKSTOWN

### **On the Hudson**

#### **Julius Petersen Inc.**

Foot of Van Houten St., Nyack, NY 10960 • 358-2100

Old Nyack families held ownership of the yard. The John Van Houten Family, owners since the early 1800's, originally founded the yard. Then James P. Voris and passed it onto Samuel Ayers and finally it was purchased in the 1940's by Julius Petersen who built government crafts during the war effort. Young Edward Hopper spent time drawing and sketching here. . . . . G5

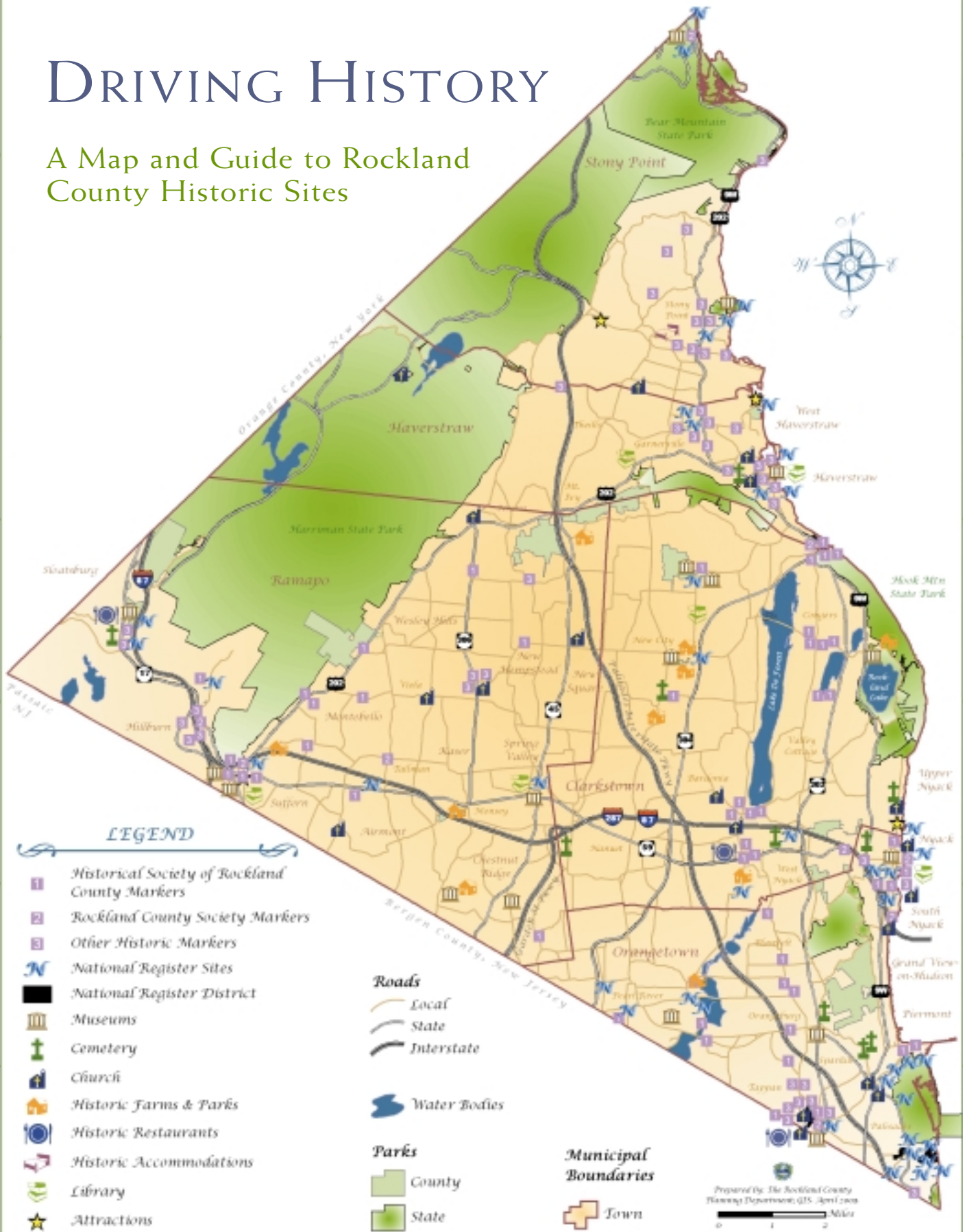
#### **Rockland Friends of Clearwater**

A local chapter of the Hudson River Sloop Clearwater, Inc. (Clearwater).  
rocclear@hotmail.com • 353-5741

Formed in 2001, the chapter promotes Clearwater's mission to preserve and restore the Hudson River and honor its history as a major component of Rockland's development over the past two centuries. The chapter focuses on Rockland County shores, adjoining streams, and environment. Through educational activities and community involvement, it promotes clean water efforts, land preservation, responsible usage of the Hudson River, and a spirit of environmental stewardship towards these precious natural resources. . . . . G5

# DRIVING HISTORY

A Map and Guide to Rockland County Historic Sites





## DIRECTIONS TO ROCKLAND

The NYS Thruway links Rockland to the east with Westchester County and to the south with New York City via the Tappan Zee Bridge; to the north with Albany and Canada; to the west with the rest of N.Y.S.

The Palisades Interstate Parkway cuts through Rockland County (exits 4-15) and gives access from New York City via the George Washington Bridge. It passes through and near the Palisades along the Hudson River and provides a scenic drive.

The Garden State Parkway links Rockland with New Jersey and points south.



**Tourism Office**  
18 New Hempstead Road  
New City, New York 10956  
1.800.295.5723  
[www.rockland.org](http://www.rockland.org)



### Rockland County Archives

for appointment, call 364-3670.

\* area codes are 845 unless otherwise indicated.

Special thanks to Marianne Leese for contributing her time and effort in developing this brochure.

All photos by Ken Karlewicz.